

Crochet Car Applique



Crochet car applique

Designed by Clare Sullivan

Video tutorial –

<http://youtu.be/ukChnM2jl48>

US terminology

Easy

Small amounts of [Red heart super saver yarn](#)

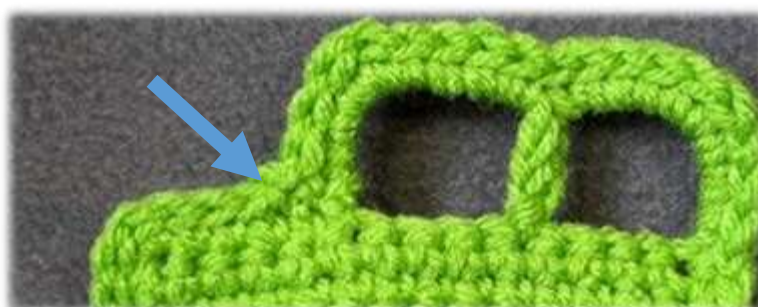
4.5mm / G hook

Scissors

Yarn needle

***Post contains affiliate links. Any purchase made via my links will earn me a little commission (at no extra cost to you) and helps me to keep making my written patterns and video tutorials - thank you in advance if you make a purchase via my links :)*

1. Ch 15, sc into the 2nd ch from hook and each ch across, turn
2. Ch 1 (does not count as a stitch) sc into same stitch as ch 1, sc into each stitch across, turn
3. Repeat last row until you have 7 rows
8. *Ch 12, skip 3 stitches, slip stitch into the next*repeat from * to * once more, sc into remaining stitches, 3 sc into the last stitch (the 3 sc are your corner) Working down the side/end 1 sc into the end of each row, 3 sc into the last, sc across the foundation chain, 3 sc into last stitch. Working down the side/end 1 sc into the end of each row, 9 sc into ch 12 loop, 9 sc into next ch 12 loop, slip stitch into first sc – this will be where the bonnet meets the window ☺



9. Slip stitch around the outside of the project – Make sure you don't work your slip stitches too tight ☺ FO and sew in ends

Wheels – make 2

1. MC, ch 1 (does not count as a stitch) 10 sc into circle, slip stitch to first sc to join
2. Join in black, 2 sc into each stitch, slip stitch to first sc to join, FO sew in ends